

**Model T210-001
Foot Prop**

T210-001-PC



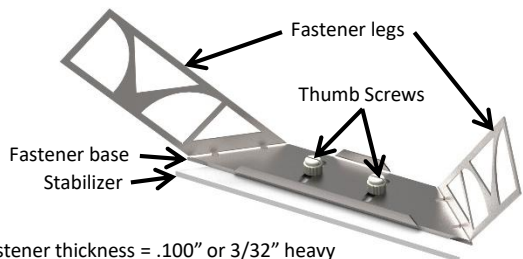
T210-001-BN



T210-001-ORB



STEP 1 Understand PermaTile™ Fastener



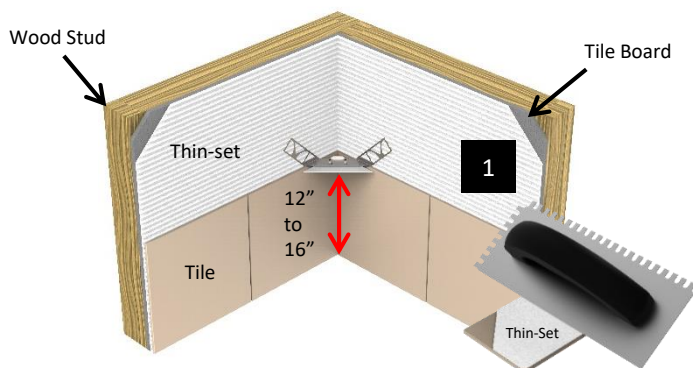
Fastener thickness = .100" or 3/32" heavy

• Each PermaTile™ foot prop fastener was designed to install on the top of a row (between a grout joint) or in the body of a tile.

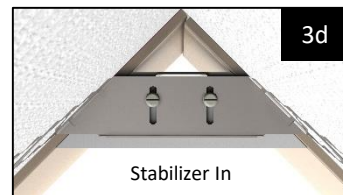
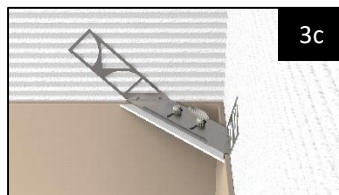
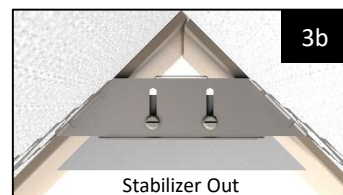
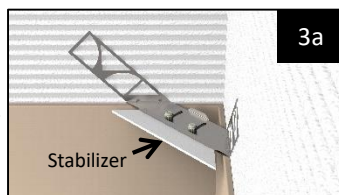
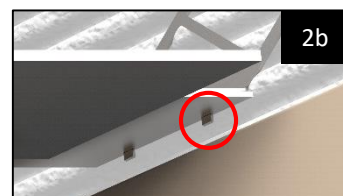
Warning: The success of this installation system requires that the tile professional clearly understands the thickness of a tile product. Failure to understand this requirement will lead to improper installation.

Note: System will not work on tile thicknesses less than 5/32" or greater than 1/2"

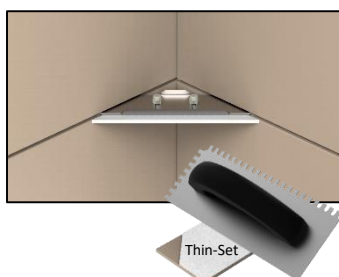
STEP 2 Installing PermaTile™ Fastener



1. Determine height – position fastener base approximately 12" to 16" from finished floor surface. Apply thin-set mortar with no less than a 1/4" x 3/8" notch trowel.
2. Press the PermaTile™ Fastener into combed thin-set mortar, adjusting so all tabs touch the backside of tile.
3. Once situated, advance stabilizer forward so it sits squarely against left and right side tiles. When in the appropriate position tighten thumb screws – see step 3d.



Stabilizer must touch left and right side tiles squarely



Note: Stabilizer reflects the exact position of foot prop prior to mounting. If stabilizer is not flush (meaning gaps are visible) foot prop will mount incorrectly. If tile material has varying thicknesses, we suggest that installer test foot prop trim with screws to ensure fastener is in correct position.

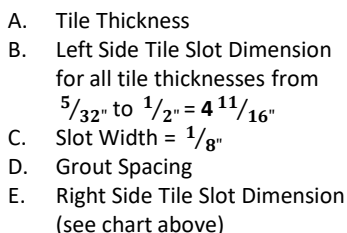
Warning: Use only latex modified mortars that meet ANSI A118.4/A118.11 performance standard.

STEP 3 Tiling Over Fastener Legs

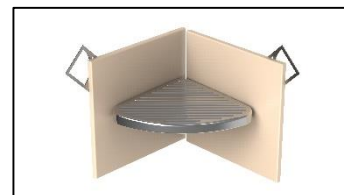
- Key thin-set mortar into the backside of tile to ensure proper contact and adhesion.
 - After covering each fastener leg, re-confirm alignment to ensure stabilizer is positioned properly.
 - If grout joint is thinner than 3/32" notching around fastener will be required.
 - If installed into the body of a tile an 1/8" saw cut will be required to slip fastener into setting position.
- Follow TILE SLOTTING GUIDELINES (see next page)**
- Complete tile installation.

PRODUCT LIMITATION

The PermaTile™ Fastener System will work with ceramic, porcelain, natural stone and glass tile materials. System tested by TCNA using ANSI A118.4 thin-set mortars and ANSI A137.1 – 4 1/4" x 4 1/4", glazed wall tile. All tile products equal to or larger than tested size will match test performance. It is recommended that tile products smaller than tested size employ a higher bond strength thin-set mortar (equal to A118.11). Additionally, using the PermaTile™ Fastener in conjunction with glass products will require ANSI approved mortar products. Note: Foot prop is equipped with an anti-skid surface and designed for propping one's foot. Foot prop should never be used as a step.



E - RIGHT SIDE TILE SLOTTING GUIDELINES									
D - Grout Spacing	A - Tile Thickness (thickness applies to both left & right side tiles)								
	$\frac{5}{32} = 0.156$	$\frac{3}{16} = 0.188$	$\frac{1}{4} = 0.250$	$\frac{5}{16} = 0.313$	$\frac{3}{8} = 0.375$	$\frac{7}{16} = 0.438$	$\frac{1}{2} = 0.500$		
NONE	$\frac{4}{5/8} = 4.625$	$\frac{4}{9/16} = 4.563$	$\frac{4}{1/2} = 4.500$	$\frac{4}{7/16} = 4.438$	$\frac{4}{3/8} = 4.375$	$\frac{4}{5/16} = 4.313$	$\frac{4}{1/4} = 4.250$	$\frac{4}{3/16} = 4.188$	$\frac{4}{1/8} = 4.125$
$\frac{1}{16} = 0.063$	$\frac{4}{9/16} = 4.563$	$\frac{4}{1/2} = 4.500$	$\frac{4}{7/16} = 4.438$	$\frac{4}{3/8} = 4.375$	$\frac{4}{5/16} = 4.313$	$\frac{4}{1/4} = 4.250$	$\frac{4}{3/16} = 4.188$	$\frac{4}{1/8} = 4.125$	$\frac{4}{1/16} = 4.063$
$\frac{1}{8} = 0.125$	$\frac{4}{1/2} = 4.500$	$\frac{4}{7/16} = 4.438$	$\frac{4}{3/8} = 4.375$	$\frac{4}{5/16} = 4.313$	$\frac{4}{1/4} = 4.250$	$\frac{4}{3/16} = 4.188$	$\frac{4}{1/8} = 4.125$	$\frac{4}{1/16} = 4.063$	$\frac{4}{1/32} = 4.000$
$\frac{3}{16} = 0.188$	$\frac{4}{7/16} = 4.438$	$\frac{4}{3/8} = 4.375$	$\frac{4}{5/16} = 4.313$	$\frac{4}{1/4} = 4.250$	$\frac{4}{3/16} = 4.188$	$\frac{4}{1/8} = 4.125$	$\frac{4}{1/16} = 4.063$	$\frac{4}{1/32} = 4.000$	$\frac{4}{1/64} = 3.938$
$\frac{1}{4} = 0.250$	$\frac{4}{3/8} = 4.375$	$\frac{4}{5/16} = 4.313$	$\frac{4}{1/4} = 4.250$	$\frac{4}{3/16} = 4.188$	$\frac{4}{1/8} = 4.125$	$\frac{4}{1/16} = 4.063$	$\frac{4}{1/32} = 4.000$	$\frac{4}{1/64} = 3.938$	$\frac{4}{1/128} = 3.875$



©2012-2016 TileWare Products. All rights reserved. PermaTile™ Fastener Patented. US Patent No. 8,161,700, Australian Patent No. 2011205360