



TILEWARE
PRODUCTS



**FASTENER SYSTEM ONLY WORKS WITH WOOD BLOCKING
(DO NOT USE WALL ANCHORS WITH THIS SYSTEM)**

**For 1/2"
Materials Only**

Promessa™ Series Hooks

Revised: 8/21/17

Installation Procedures (Gypsum Wallboard/Drywall Surfaces)

For The Following Models:

Cone Hooks



G101-111-PC



G101-111-BN



G101-111-ORB



G101-112-PC



G101-112-BN



G101-112-ORB

Tee Hooks



G101-211-PC



G101-211-BN



G101-211-ORB



G101-212-PC



G101-212-BN



G101-212-ORB

Thumb Hooks



G101-311-PC



G101-311-BN



G101-311-ORB



G101-312-PC

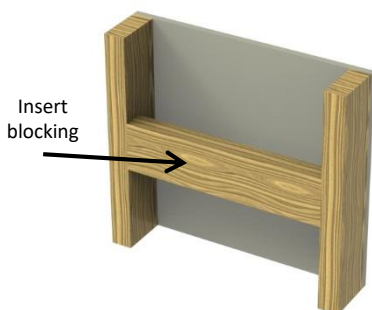


G101-312-BN



G101-312-ORB

STEP 1 Insert Blocking

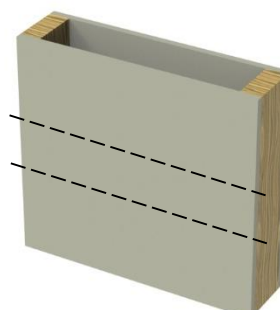


- Insert no less than 2"x 4" wood blocking or locate in vertical stud.

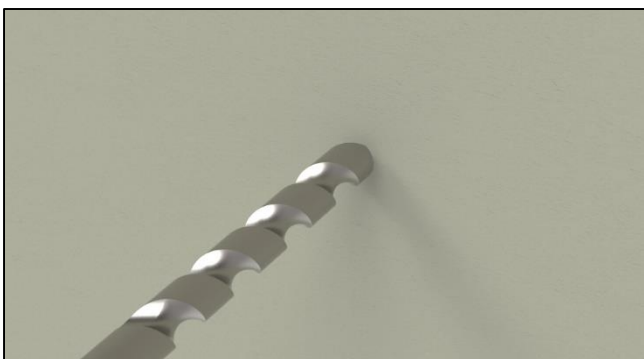
**Warning: FASTENER SYSTEM
ONLY WORKS WITH WOOD
BLOCKING**

**(DO NOT USE WALL ANCHORS
WITH THIS SYSTEM)**

STEP 2 Locate Wood Blocking



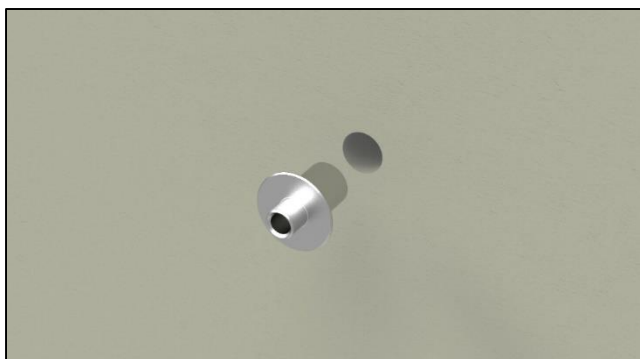
STEP 3 Pre-drill a 3/8" hole



- Pre-drill a 3/8" hole in gypsum wall board (drywall) to accommodate spacer in step 4. Place some tape on the drill to mark drill depth. (Example: If wallboard material is 1/2" thickness, only drill that depth. Do not drill into wood blocking or stud where accessory is being attached)

Warning: Do not drill deeper than the thickness of gypsum wallboard (drywall) material.

STEP 4 Insert Spacer



Technical Fact:

Spacer prevents gypsum wallboard (drywall) from collapsing at drilled hole. Additionally, protects from over-tightening screw which can draw the accessory into the gypsum wall board (drywall) material.



TILEWARE
PRODUCTS



**FASTENER SYSTEM ONLY WORKS WITH WOOD BLOCKING
(DO NOT USE WALL ANCHORS WITH THIS SYSTEM)**

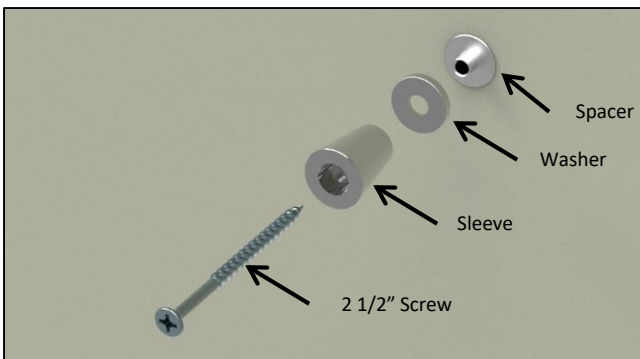
For 1/2" Materials Only

Promessa™ Series Hooks

Revised: 8/21/17

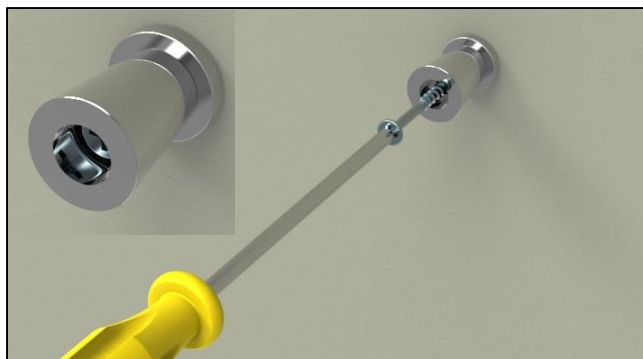
Installation Procedures (Gypsum Wallboard/Drywall Surfaces)

STEP 5 Attach Trim



- Slip washer over spacer (spacer centers trim) while inserting 2 1/2" screw through all components. Proceed with attaching to wood blocking or vertical stud.

STEP 6 Mount Sleeve & Screw



- Using a #2 phillips head screw driver, attach screw firmly to wall.

Thank you for using our products!

TileWare Products

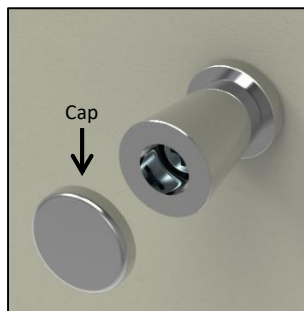
PO Box 793, Hickory, NC 28603

Technical Support: 828-322-9273

Email: info@tilewareproducts.com

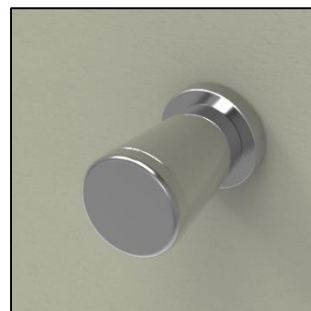
www.tilewareproducts.com

STEP 7 Attach Cap





- Thread on Cap.

STEP 8 Complete



- Installation complete.

Hooks Parts List

Model	Spacer quantity 1 per kit	Washer quantity 1 per kit	Sleeve quantity 1 per kit	Cap quantity 1 per kit	2 1/2" Screw quantity 1 per kit
G101-111 or G101-112 Cone Hook Kits	C200-044 	C220-006 	C220-003 	C220-005 or C220-012 Contemporary - Traditional 	C200-041 
G101-211 or G101-212 Tee Hook Kits	C200-044 	C220-006 	C220-002 	C220-005 or C220-012 Contemporary - Traditional 	C200-041 
G101-311 or G101-312 Thumb Hook Kits	C200-044 	NO WASHER REQUIRED	C220-004 	C220-005 or C220-012 Contemporary - Traditional 	C200-041 