

PRODUCT SPECIFICATION SHEET

PART: G101-311

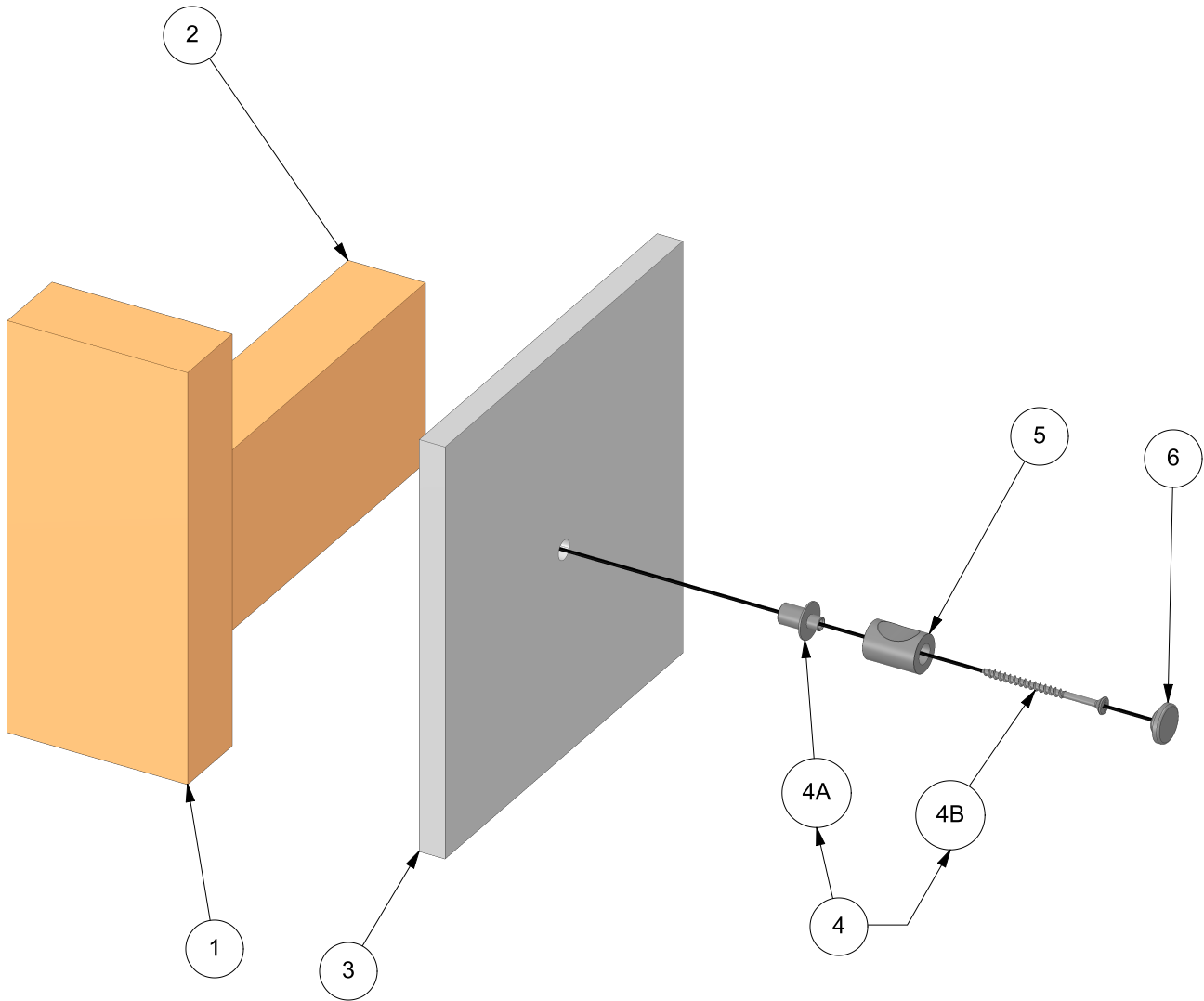
PROMESSA™ SERIES

THUMB HOOK (CONTEMPORARY) KIT

[GYPSUM WALLBOARD SYSTEMS]

FINISHES: PC, BN, ORB

FASTENER SYSTEM WORKS WITH ALL GYPSUM WALLBOARD HOOK MODELS
FASTENER SYSTEM ONLY WORKS WITH WOOD BLOCKING (DO NOT USE WALL ANCHORS)
REFER TO INSTALLATION INSTRUCTIONS BEFORE USE



TW-ENG5



TileWare Products
www.tilewareproducts.com

Office (828) 322-9273 Fax (828) 304-1076

ERP PART #	REFERENCED ABOVE	APPROVALS	DATE
DWG #	581A	RLS	5/11/16
SHEET 1 OF 3	SCALE 1:3		
WEIGHT:	0.117 LB	CUBED:	0.433 IN ³

PRODUCT SPECIFICATION SHEET

PART: G101-311

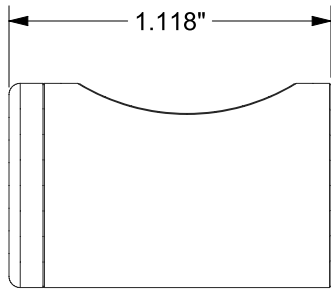
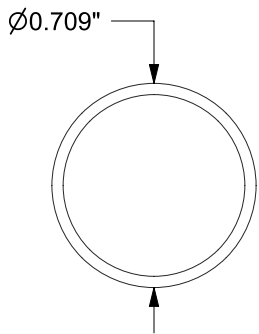
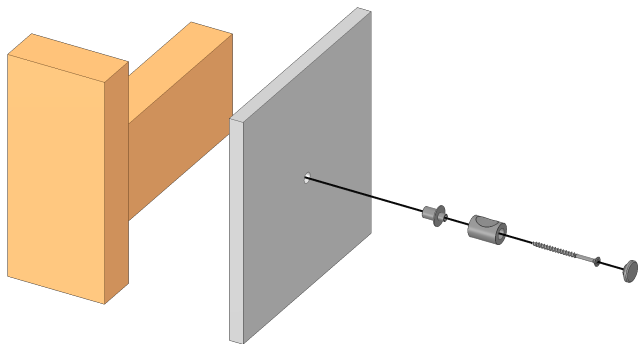
FASTENER SYSTEM WORKS WITH ALL GYPSUM WALLBOARD HOOK MODELS
FASTENER SYSTEM ONLY WORKS WITH WOOD BLOCKING (DO NOT USE WALL ANCHORS)
REFER TO INSTALLATION INSTRUCTIONS BEFORE USE

PROMESSA™ SERIES

THUMB HOOK (CONTEMPORARY) KIT

[GYPSUM WALLBOARD SYSTEMS]

FINISHES: PC, BN, ORB



TW-ENG5



TileWare Products
www.tilewareproducts.com

Office (828) 322-9273 Fax (828) 304-1076

ERP PART #	REFERENCED ABOVE	APPROVALS	DATE
DWG #	581A	RLS	5/11/16
SHEET 2 OF 3	SCALE 3:2		
WEIGHT:	0.117 LB	CUBED:	0.433 IN³

PRODUCT SPECIFICATION SHEET	PART: G101-311
-----------------------------	----------------

PART: G101-311


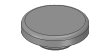


FASTENER SYSTEM WORKS WITH ALL GYPSUM WALLBOARD HOOK MODELS
FASTENER SYSTEM ONLY WORKS WITH WOOD BLOCKING (DO NOT USE WALL ANCHORS)
REFER TO INSTALLATION INSTRUCTIONS BEFORE USE

PROMESSA™ SERIES

THUMB HOOK (CONTEMPORARY) KIT

[GYPSUM WALLBOARD SYSTEMS]

FINISHES: PC, BN, ORB

MODEL IMAGE	REF #	PART #	DESCRIPTION	MATERIAL	QTY	MODEL IMAGE	REF #	PART #	DESCRIPTION	MATERIAL	QTY
	1		STUD WALL PARTITION	WOOD			5	C220-004	THUMB HOOK SLEEVE	BRASS	1
	2		STUD WALL BLOCKING	WOOD			6	C220-005	CONTEMPORARY CAP	BRASS	1
	3		WALLBOARD PANEL	GYPSUM PANEL							
	4	PG100-507	HOOK GYPSUM WALLBOARD FASTENER	ASSEMBLY	1						
	4A	C200-044	SPACER	ALUMINUM	1						
	4B	C200-041	# 8 X 2 1/2" PHILLIPS FLAT HEAD SCREW	ZIN C- PLATED	1						

ERP PART #	REFERENCED ABOVE	APPROVALS	DATE
DWG #	581A	RLS	5/11/16
SHEET 3 OF 3	SCALE N/A		
WEIGHT:	0.117 LB	CUBED:	0.433 IN

TW-ENG5



TileWare Products

www.tilewareproducts.com

Office (828) 322-9273 Fax (828) 304-1076