

PRODUCT SPECIFICATION SHEET WORKS W / ALL (GWB) MODELS

VICTORIA™ SERIES

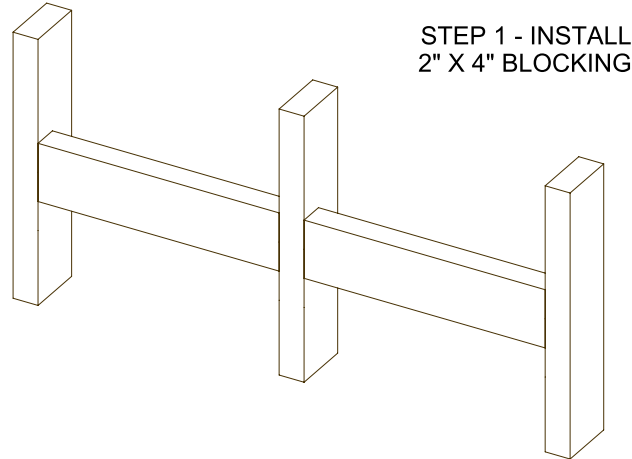
GRAB BARS 18", 24", 36", 42" COMPLETE KITS

INSTALLATION TYPE = GYPSUM WALLBOARD

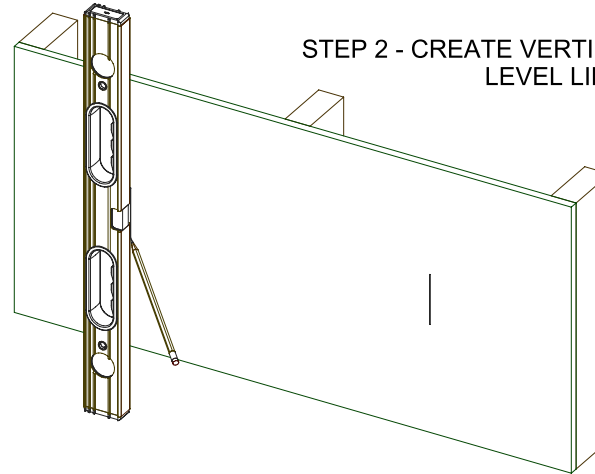
FINISHES: PC, BN, ORB

FASTENER SYSTEM ONLY WORKS WITH 1/2" & 5/8" GYPSUM WALLBOARD (GWB)
FASTENER SYSTEM ONLY WORKS WITH WOOD BLOCKING (NO WALL ANCHORS)
REFER TO INSTALLATION INSTRUCTIONS BEFORE USE
COMPATIBLE WITH ALL TILEWARE GRAB BAR MODELS & FINISHES

ADA



STEP 1 - INSTALL
2" X 4" BLOCKING



STEP 2 - CREATE VERTICAL
LEVEL LINES

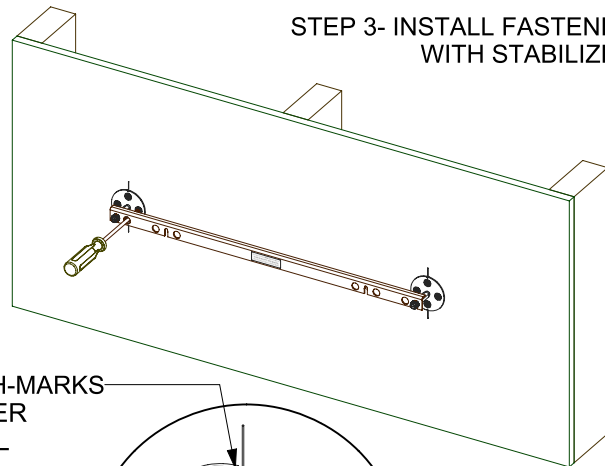
DISTANCE BETWEEN
LEVEL LINES

18" GRAB BAR = 12"

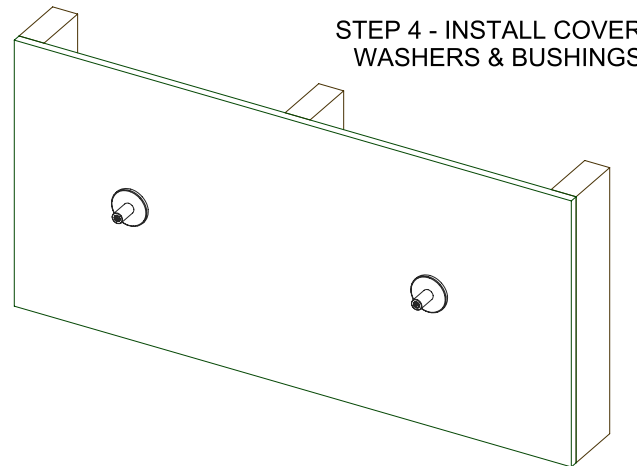
24" GRAB BAR = 18"

36" GRAB BAR = 24"

42" GRAB BAR = 24"

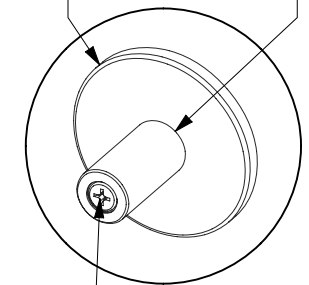


STEP 3 - INSTALL FASTENER
WITH STABILIZER



STEP 4 - INSTALL COVER
WASHERS & BUSHINGS

COVER WASHER BUSHING



10-24 SCREW

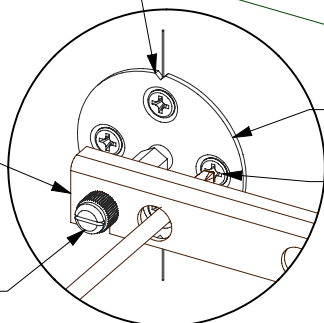
ALIGN HASH-MARKS
IN FASTENER
WITH LEVEL
LINES

STABILIZER

FASTENER

WOOD SCREW

THUMB SCREW



STABILIZER INCLUDED IN KIT ASSISTS IN PROPERLY MOUNTING GRAB BAR. MAKE SURE HASH-MARKS ON GWB FASTENERS ALIGN WITH LEVEL LINES. ALTERNATE SCREW ATTACHMENT STARTING WITH VERTICAL HOLES, PROCEED WITH HORIZONTAL HOLES. FASTENERS SHOULD FIT FLUSH WITH COUNTERSINK RECESSES DRAWN INTO GYPSUM WALLBOARD SURFACE.

NOTE: STABILIZER REPRESENTS THE PRECISE MOUNTING DIMENSIONS OF GRAB BAR. WHEN MOUNTED PROPERLY STABILIZER SHOULD "FREELY" SLIP ON AND OFF THUMB SCREWS.

ERP PART #		APPROVALS	DATE
DWG #	561	RLS	6/5/19
SHEET 1 OF 2	SCALE 1:10		
WEIGHT:	LB	CUBED:	IN ³

TW-ENG6



www.tilewareproducts.com

Office (828) 322-9273 Fax (828) 304-1076

PRODUCT SPECIFICATION SHEET WORKS W / ALL (GWB) MODELS

VICTORIA™ SERIES

GRAB BARS 18", 24", 36", 42" COMPLETE KITS

INSTALLATION TYPE = GYPSUM WALLBOARD

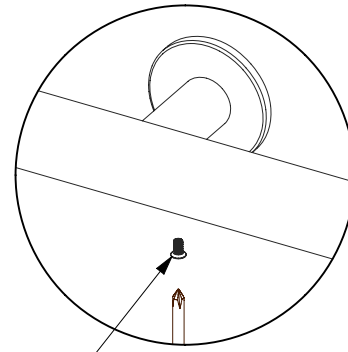
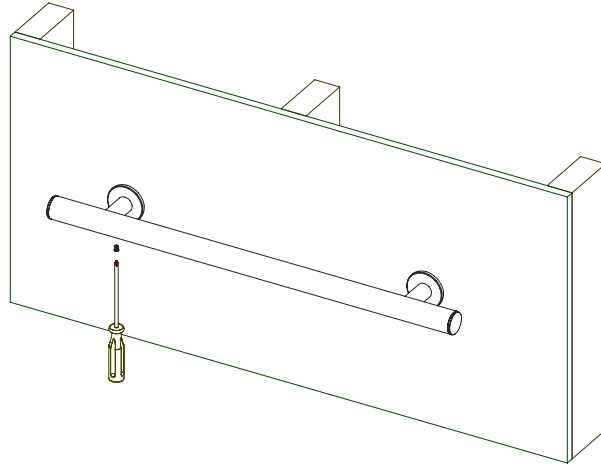
FINISHES: PC, BN, ORB

FASTENER SYSTEM ONLY WORKS WITH 1/2" & 5/8" GYPSUM WALLBOARD (GWB)
FASTENER SYSTEM ONLY WORKS WITH WOOD BLOCKING (NO WALL ANCHORS)
REFER TO INSTALLATION INSTRUCTIONS BEFORE USE
COMPATIBLE WITH ALL TILEWARE GRAB BAR MODELS & FINISHES

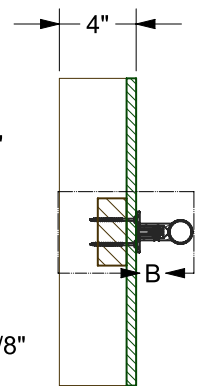
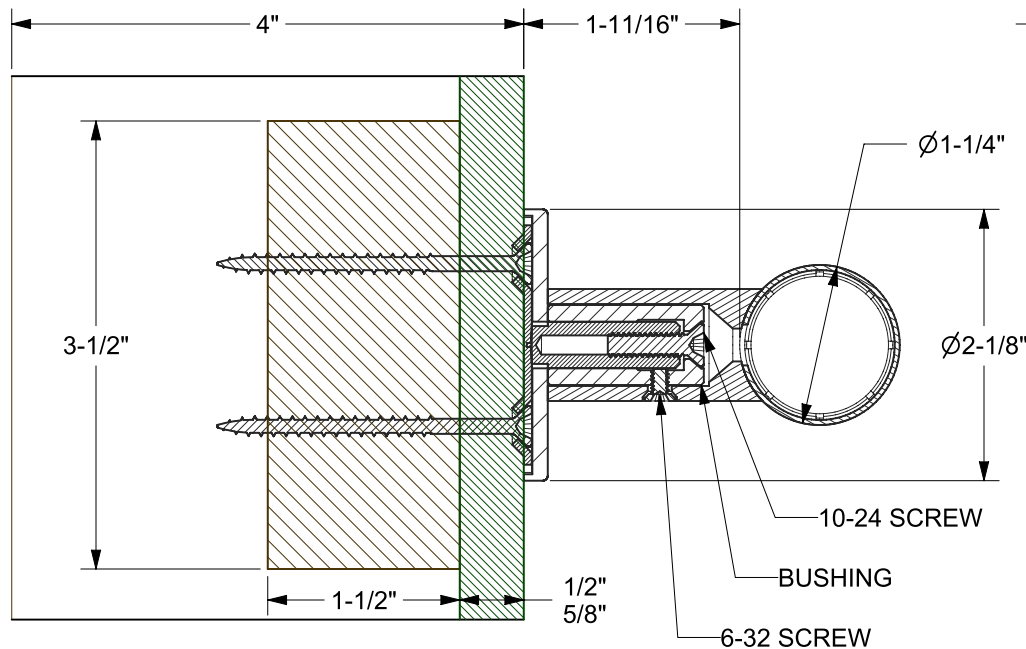
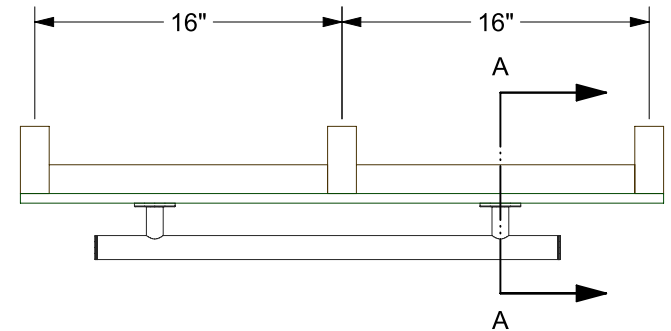
ADA



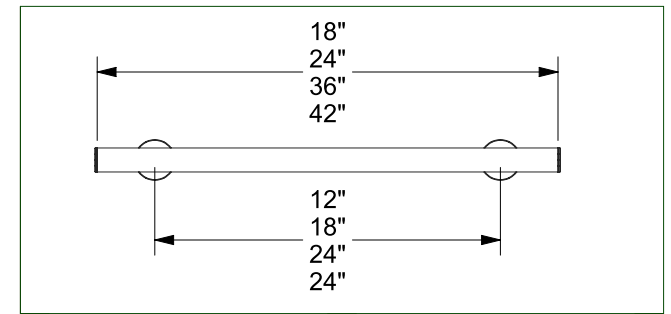
STEP 5 - INSTALL GRAB BAR WITH 6-32 SCREWS



6-32 SCREW



SECTION A-A



ERP PART #	APPROVALS	DATE
DWG #	561	RLS
SHEET 2 OF 2	SCALE 1:10	6/5/19
WEIGHT:	LB	CUBED:
		IN ³

TW-ENG6



www.tilewareproducts.com

Office (828) 322-9273 Fax (828) 304-1076