



Replacement Part | Specification

Model (SKU)

PT100-508

PermaTile™ Series Rough-In
18" On Center Tile Wall Anchor

Applicable Features & Installation Types

- Stainless steel construction with stabilizing bracket and protective thumb screws
- Mortar-based installation system (No mastic or organic adhesives allowed)
- Wall anchor configured specifically for TileWare accessories
- Refer to installation instructions before use
- Tested by TCNA
- BUY US ONCE FOR LIFE



For Tile

T

Tile Thickness Range
5/32" – 1/2" (4mm – 13mm)

- Promessa™ Series
 - Towel Bars
 - ☐ **T102-011**
 - ☐ **T102-012**

Mates with Trim Only

TX

Tile Thickness Range
5/32" – 1/2" (4mm – 13mm)

- Promessa™ Series
 - Towel Bars
 - ☐ **TX102-011**
 - ☐ **TX102-012**



p: 828-322-9273 | f: 828-304-1076
tilewareproducts.com | info@tilewareproducts.com

page 1 of 2
TW-F02-207-PT100 | REV: 8-12-20

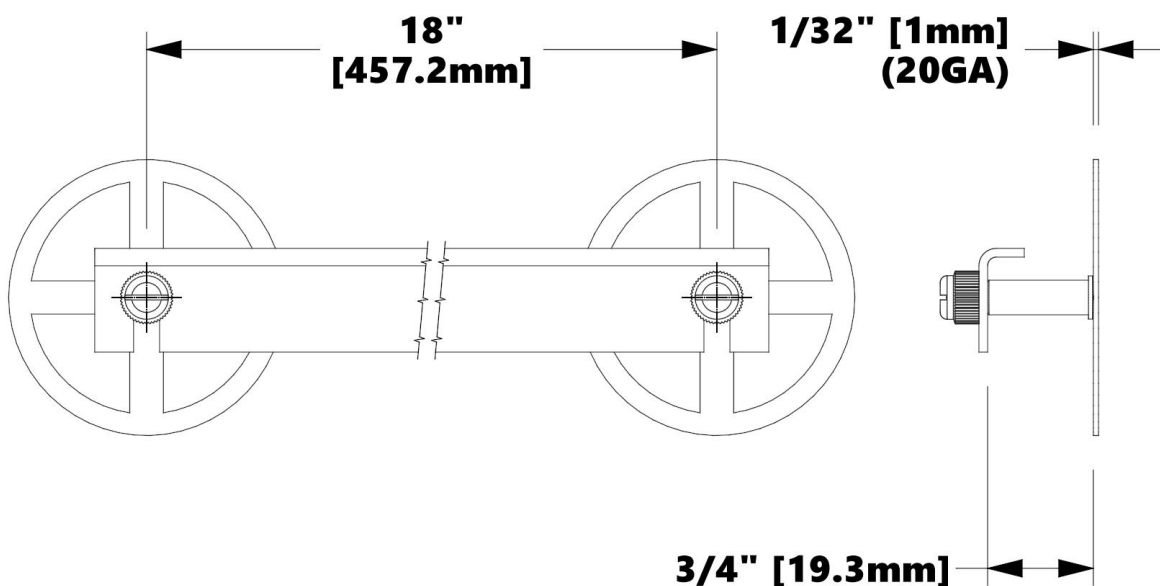


Replacement Part | Specification

Model (SKU)

PT100-508

PermaTile™ Series Rough-In
18" On Center Tile Wall Anchor



Product Dimensions (units are in both inches and mm)

Weight

0.379 lb / 0.172 kg

823

