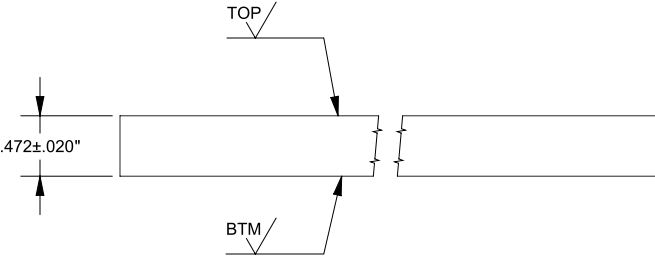
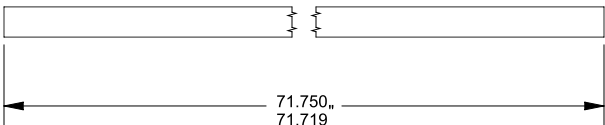
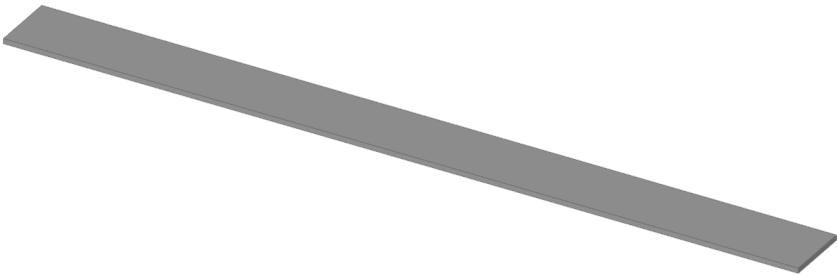
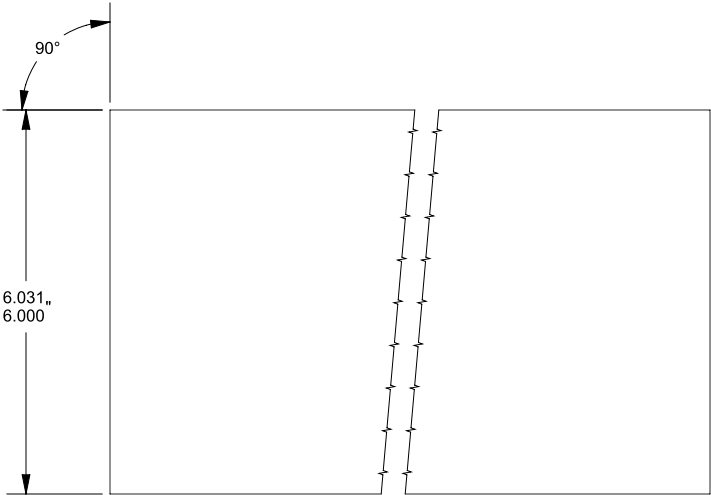


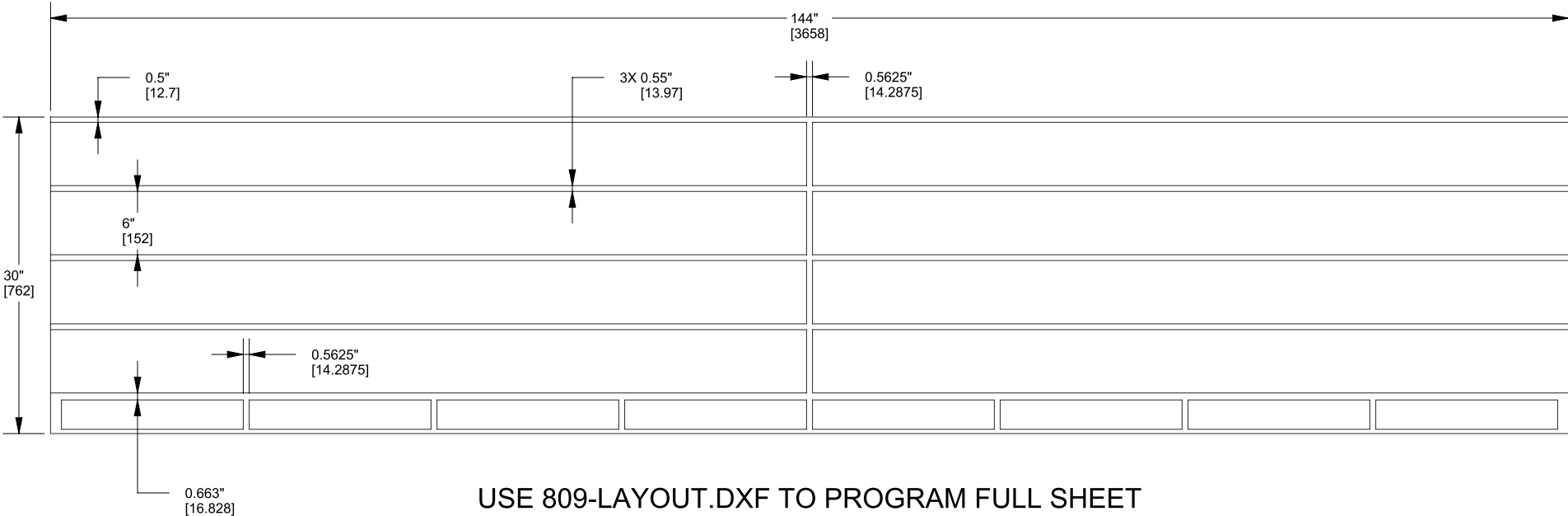
TOL	MATERIAL	PACK	YES	FINISH	YES	DESCRIPTION	PART #	C501XXX-672	DWG #	809
±	SEE BELOW	AVONITE, ACRYLIC SOLID SURFACE, 1/2" [12mm]	SEE NOTES BELOW		CURB, FINISHED TOP ONLY, 6" X 71-23/32"		SCALE	1:2	SHEET	1 OF 2



SCALE 2:3

							COLORS	
							SUPER WHITE (WHT)	
							TW-ENG1	
TOOLING / FIXTURE	LOC	MFG. INSTRUCTION / PART INSPECTION	EC #	REVISION	BY	DATE	APPROVALS	DATE
		NOTES - UNITS PER LB = 0.08	1	0.5625" TO 0.500"	RLS	6/6/19		
		BASED ON SHEET SIZE, THICKNESS = 1/2" [12mm], DIMENSIONS = 30" X 144" [762mm X 3658mm]	2	ADDED 3X 0.550"	RLS	6/6/19	DRAWN BY: RLS	6/4/19
		SEE SHEET 2 - 809 COMPONENTS PER FULL SHEET = 8, 698 COMPONENTS PER FULL SHEET = 8	3	ADDED 0.663"	RLS	6/6/19	APPROVED: DHS	6/6/19
		SURFACE FINISHING = 1 SIDED, TOP ONLY					SHOP:	
		LENGTH OF SHEET TO BE TRIMMED TO 144", STRIPED INTO 6" X 144" SECTIONS,					REVISION: DHS	6/6/19
		THEN MACHINE INTO 2 EQUAL COMPONENTS, LASTLY MACHINE RECTANGULAR SHELF COVERS					TileWare Products engineering@tilewareproducts.com 1021-16th St SW, Hickory, NC 28602 Office (828) 322-9273 Fax (828) 304-1076	
		PACKAGING, BULK PACKED VERTICALLY ON LONG SIDE ON PALLET (TOP TO TOP, BTM TO BTM)						
		MACHINE TO SPECIFICATIONS ABOVE						
Copyright © 2012-2019 TileWare Global, LLC dba TileWare Products. All rights reserved. PermaTile™ Fastener Patented. US Patent No. 8,161,700 Australian Patent No. 2011205360 Canadian Patent No. 2,787,033			WEIGHT:		12.580 LB	CUBED:	203.108 IN ³	

TOL	MATERIAL	PACK	YES	FINISH	YES	DESCRIPTION	PART #	C501XXX-672	DWG #	809
±	SEE BELOW	AVONITE, ACRYLIC SOLID SURFACE, 1/2" [12mm]	SEE NOTES BELOW			CURB, FINISHED TOP ONLY, 6" X 71-23/32"	SCALE	1:2	SHEET	2 OF 2



							COLORS	
							SUPER WHITE (WHT)	
TOOLING / FIXTURE	LOC	MFG. INSTRUCTION / PART INSPECTION	EC #	REVISION	BY	DATE	TW-ENG1	
		NOTES - UNITS PER LB = 0.08	1	0.5625" TO 0.500"	RLS	6/6/19	APPROVALS	DATE
		BASED ON SHEET SIZE, THICKNESS = 1/2" [12mm], DIMENSIONS = 30" X 144" [762mm X 3658mm]	2	ADDED 3X 0.550"	RLS	6/6/19	DRAWN BY: RLS	6/4/19
		SEE SHEET 2 - 809 COMPONENTS PER FULL SHEET = 8, 698 COMPONENTS PER FULL SHEET = 8	3	ADDED 0.663"	RLS	6/6/19	APPROVED: DHS	6/6/19
		SURFACE FINISHING = 1 SIDED, TOP ONLY					SHOP:	
		LENGTH OF SHEET TO BE TRIMMED TO 144", STRIPED INTO 6" X 144" SECTIONS,					REVISION: DHS	6/6/19
		THEN MACHINE INTO 2 EQUAL COMPONENTS, LASTLY MACHINE RECTANGULAR SHELF COVERS					TileWare Products engineering@tilewareproducts.com 1021-16th St SW, Hickory, NC 28602 Office (828) 322-9273 Fax (828) 304-1076	
		PACKAGING, BULK PACKED VERTICALLY ON LONG SIDE ON PALLET (TOP TO TOP, BTM TO BTM)						
		MACHINE TO SPECIFICATIONS ABOVE						
Copyright © 2012-2019 TileWare Global, LLC dba TileWare Products. All rights reserved. PermaTile™ Fastener Patented. US Patent No. 8,161,700 Australian Patent No. 2011205360 Canadian Patent No. 2,787,033			WEIGHT:		12.580 LB	CUBED:	203.108 IN ³	