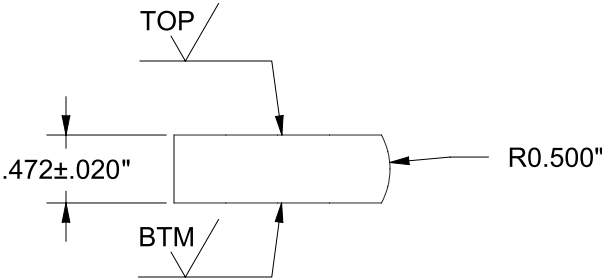
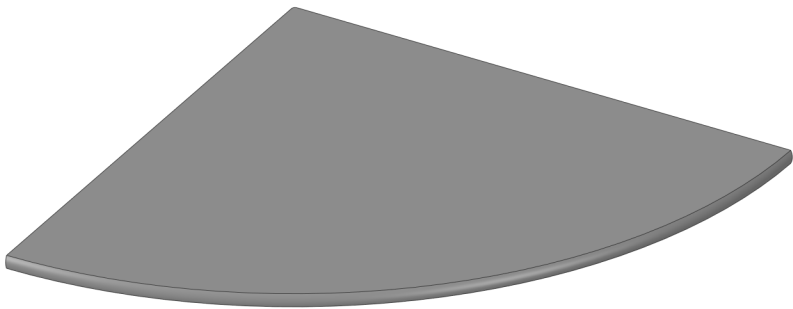
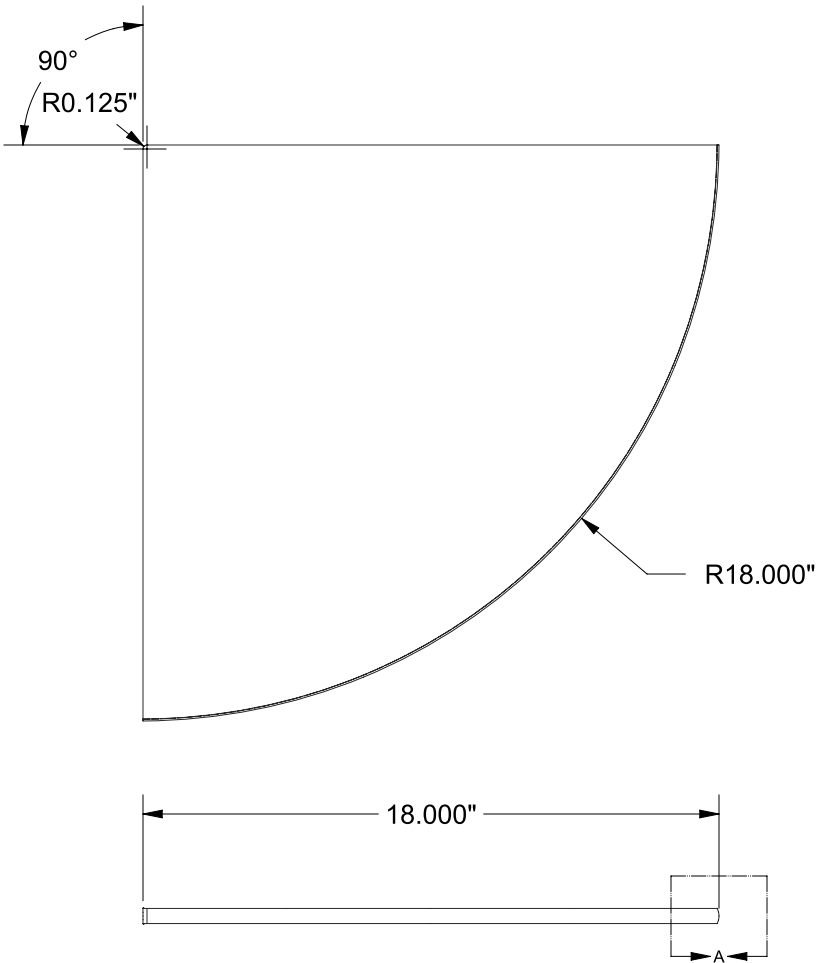


TOL	MATERIAL	PACK	FINISH	DESCRIPTION	PART #	C320XXX-18X18	DWG #	867
± 0.031"	AVONITE, ACRYLIC SOLID SURFACE, 1/2" [12mm]	SEE NOTES BELOW		PIE SEAT 18", PENCIL PROFILE, FINISHED TOP ONLY	SCALE	1:4	SHEET	1 OF 3

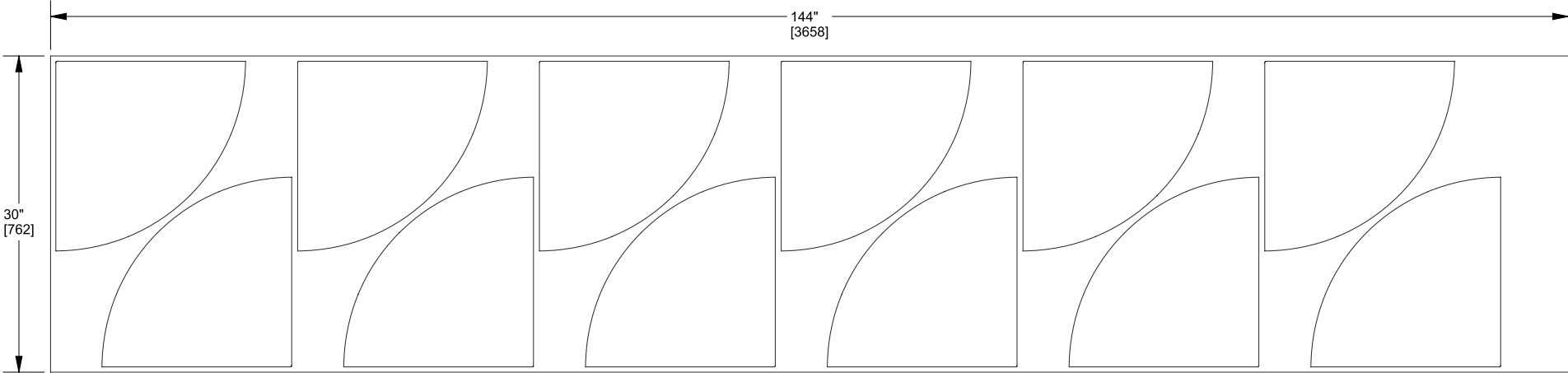


DETAIL A
SCALE 3:4

COLORS	
DOVE GREY (DVG)	
SUPER WHITE (WHT)	
TW-ENG1	
APPROVALS	DATE
DRAWN BY: RLS	2/28/22
APPROVED: DHS	3/22/22
SHOP:	
REVISION: DHS	3/22/22
TileWare Products engineering@tilewareproducts.com 1021-16th St SW, Hickory, NC 28602 Office (828) 322-9273 Fax (828) 304-1076	

TOOLING / FIXTURE	LOC	MFG. INSTRUCTION / PART INSPECTION	EC #	REVISION	BY	DATE
		NOTES, UNITS PER LB = 0.144, SURFACE FINISHING = 1 SIDED, FINISHED TOP ONLY	6	REMOVED 17.596"	RLS	3/7/22
		BASED ON SHEET SIZE, THICKNESS = 1/2" [12mm], DIMENSIONS = 30" X 144" [762mm X 3658mm]	7	REMOVED 17.283"	RLS	3/7/22
		USE BOUNDLESS CUSTOM TOOL TO CREATE FRONT PENCIL PROFILE = R0.500" (DWG# 867 ONLY)	8	REMOVED 0.548"	RLS	3/7/22
		SEE SHEET 2 - DWG# 867 ONLY, COMPONENTS PER FULL SHEET = 12	9	REMOVED R0.313"	RLS	3/7/22
		SEE SHEET 3 - DWG# 810 & DWG# 706 & DWG# 867	10	REMOVED 0.080"	RLS	3/7/22
		COMPONENTS PER FULL SHEET = 4 PER EACH DWG#	11	ADDED 0.125"	RLS	3/22/22
		PACKAGING, BULK PACKED VERTICALLY IN BOX OR ON PALLET (TOP TO TOP, BTM TO BTM)				
		MACHINE TO SPECIFICATIONS ABOVE				
Copyright © 2012-2022 TileWare Global, LLC dba TileWare Products®. All rights reserved. PermaTile™ Fastener Patented. US Patent No. 8,161,700 Australian Patent No. 2011205360 Canadian Patent No. 2,787,033. System And Method For Wall Mounting With A Rotating Bushing Patented. US Patent No. 10989353			WEIGHT:	6.927 LB	CUBED:	119.851 IN ³

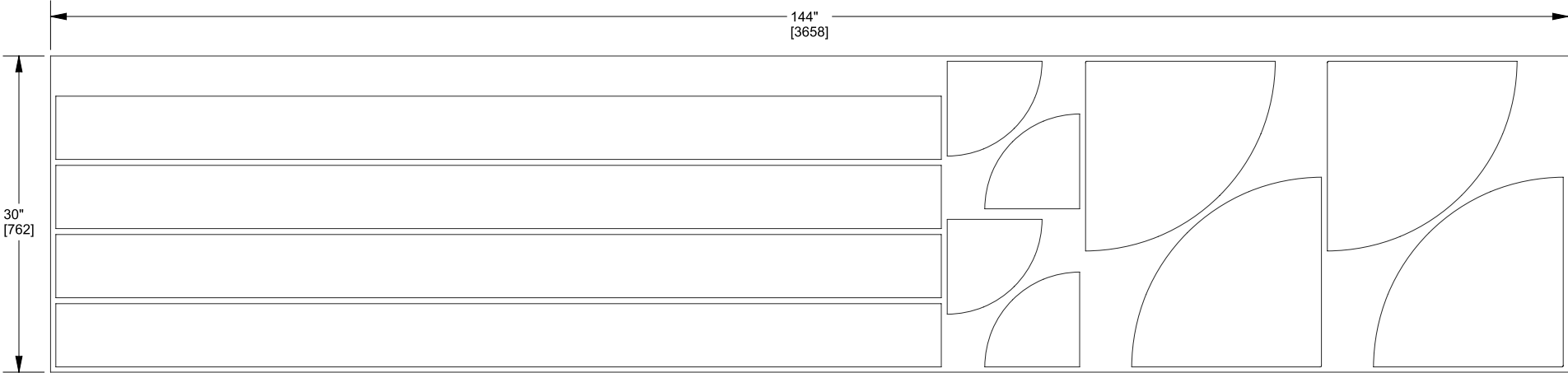
TOL	MATERIAL	PACK	FINISH	DESCRIPTION	PART #	DWG #	867
± 0.031"	AVONITE, ACRYLIC SOLID SURFACE, 1/2" [12mm]	SEE NOTES BELOW		PIE SEAT 18", PENCIL PROFILE, FINISHED TOP ONLY	SCALE	1:15	SHEET 2 OF 3



USE 867-LAYOUT-1.DXF TO PROGRAM FULL SHEET

							COLORS	
							DOVE GREY (DVG)	
							SUPER WHITE (WHT)	
TOOLING / FIXTURE	LOC	MFG. INSTRUCTION / PART INSPECTION	EC #	REVISION	BY	DATE	TW-ENG1	
		NOTES, UNITS PER LB = 0.144, SURFACE FINISHING = 1 SIDED, FINISHED TOP ONLY	6	REMOVED 17.596"	RLS	3/7/22	APPROVALS	DATE
		BASED ON SHEET SIZE, THICKNESS = 1/2" [12mm], DIMENSIONS = 30" X 144" [762mm X 3658mm]	7	REMOVED 17.283"	RLS	3/7/22	DRAWN BY: RLS	2/28/22
		USE BOUNDLESS CUSTOM TOOL TO CREATE FRONT PENCIL PROFILE = R0.500" (DWG# 867 ONLY)	8	REMOVED 0.548"	RLS	3/7/22	APPROVED: DHS	3/22/22
		SEE SHEET 2 - DWG# 867 ONLY, COMPONENTS PER FULL SHEET = 12	9	REMOVED R0.313"	RLS	3/7/22	SHOP:	
		SEE SHEET 3 - DWG# 810 & DWG# 706 & DWG# 867	10	REMOVED 0.080"	RLS	3/7/22	REVISION: DHS	3/22/22
		COMPONENTS PER FULL SHEET = 4 PER EACH DWG#	11	ADDED 0.125"	RLS	3/22/22	TileWare Products engineering@tilewareproducts.com 1021-16th St SW, Hickory, NC 28602 Office (828) 322-9273 Fax (828) 304-1076	
		PACKAGING, BULK PACKED VERTICALLY IN BOX OR ON PALLET (TOP TO TOP, BTM TO BTM)						
		MACHINE TO SPECIFICATIONS ABOVE						
Copyright © 2012-2022 TileWare Global, LLC dba TileWare Products®. All rights reserved. PermaTile™ Fastener Patented. US Patent No. 8,161,700 Australian Patent No. 2011205360 Canadian Patent No. 2,787,033. System And Method For Wall Mounting With A Rotating Bushing Patented. US Patent No. 10989353			WEIGHT: 6.927 LB		CUBED: 119.851 IN³			

TOL	MATERIAL	PACK	YES	FINISH	YES	DESCRIPTION	PART #	C320XXX-18X18	DWG #	867
±	0.031"	AVONITE, ACRYLIC SOLID SURFACE, 1/2" [12mm]	SEE NOTES BELOW			PIE SEAT 18", PENCIL PROFILE, FINISHED TOP ONLY	SCALE	1:15	SHEET	3 OF 3



USE 867-LAYOUT-2.DXF TO PROGRAM FULL SHEET

							COLORS	
							DOVE GREY (DVG)	
							SUPER WHITE (WHT)	
TOOLING / FIXTURE	LOC	MFG. INSTRUCTION / PART INSPECTION	EC #	REVISION	BY	DATE	TW-ENG1	
		NOTES, UNITS PER LB = 0.144, SURFACE FINISHING = 1 SIDED, FINISHED TOP ONLY	6	REMOVED 17.596"	RLS	3/7/22	APPROVALS	DATE
		BASED ON SHEET SIZE, THICKNESS = 1/2" [12mm], DIMENSIONS = 30" X 144" [762mm X 3658mm]	7	REMOVED 17.283"	RLS	3/7/22	DRAWN BY: RLS	2/28/22
		USE BOUNDLESS CUSTOM TOOL TO CREATE FRONT PENCIL PROFILE = R0.500" (DWG# 867 ONLY)	8	REMOVED 0.548"	RLS	3/7/22	APPROVED: DHS	3/22/22
		SEE SHEET 2 - DWG# 867 ONLY, COMPONENTS PER FULL SHEET = 12	9	REMOVED R0.313"	RLS	3/7/22	SHOP:	
		SEE SHEET 3 - DWG# 810 & DWG# 706 & DWG# 867	10	REMOVED 0.080"	RLS	3/7/22	REVISION: DHS	3/22/22
		COMPONENTS PER FULL SHEET = 4 PER EACH DWG#	11	ADDED 0.125"	RLS	3/22/22	TileWare Products engineering@tilewareproducts.com 1021-16th St SW, Hickory, NC 28602 Office (828) 322-9273 Fax (828) 304-1076	
		PACKAGING, BULK PACKED VERTICALLY IN BOX OR ON PALLET (TOP TO TOP, BTM TO BTM)						
		MACHINE TO SPECIFICATIONS ABOVE						
Copyright © 2012-2022 TileWare Global, LLC dba TileWare Products®. All rights reserved. PermaTile™ Fastener Patented. US Patent No. 8,161,700 Australian Patent No. 2011205360 Canadian Patent No. 2,787,033. System And Method For Wall Mounting With A Rotating Bushing Patented. US Patent No. 10989353			WEIGHT: 6.927 LB		CUBED: 119.851 IN³			