

**Model T102-011  
Towel Bar (Contemporary)**



T102-011-PC



T102-011-BN



T102-011-ORB

**Model T102-012  
Towel Bar (Traditional)**



T102-012-PC

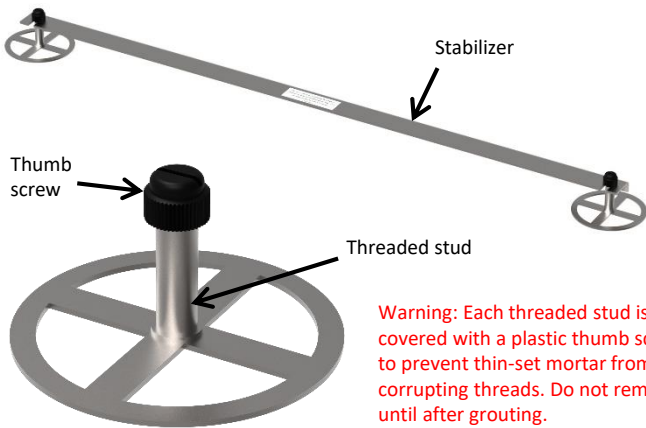


T102-012-BN



T102-012-ORB

## STEP 1 Understand Fastener

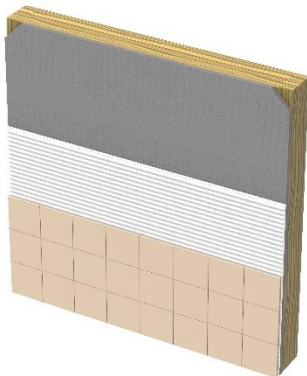


- Prepackaged plastic thumb screws should not be removed until after grouting.
- Each fastener is equipped with a stabilizing bracket. The bracket ensures that each towel bar system will mount at the predetermined location. Remove stabilizer after thin-set has met minimum cure times specified by manufacturer.

**Not using stabilizer will result in towel bar mounting failure**

## STEP 2 Determine Towel Bar Location

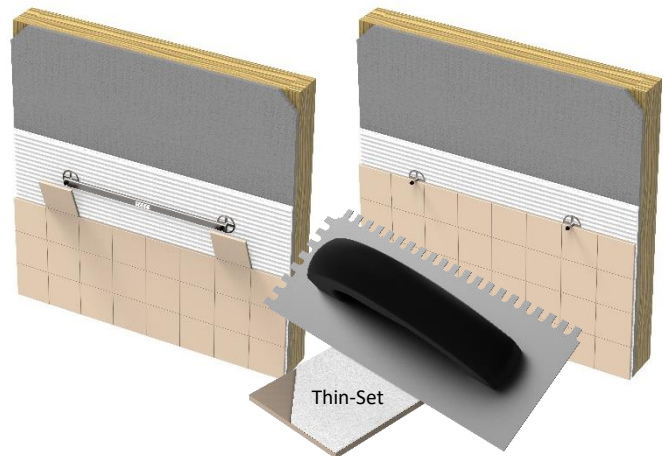
- Determine the wall surface where the PermaTile™ Fastener should be located.
- Apply thin-set mortar with no less than a 1/4" x 3/8" notch trowel.



**Warning:** Use only latex modified mortars that meet ANSI A118.4/A118.11 performance standard.

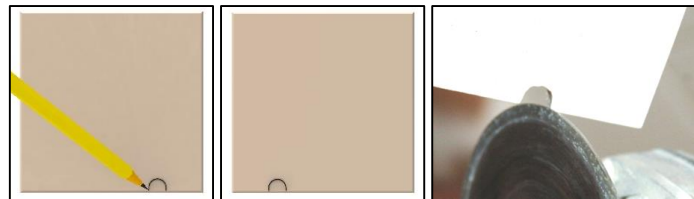
**Note:** System will not work on tile thicknesses less than 5/32" or greater than 1/2"

## STEP 3 Install PermaTile™ Fastener



- Key thin-set mortar into the back side of tile to ensure proper contact and adhesion.
- Press the PermaTile™ Fastener into the combed thin-set mortar at the predetermined location.
- Adjust as necessary, setting stud directly on tile edge.

## STEP 4 Mark & Notch Tiles

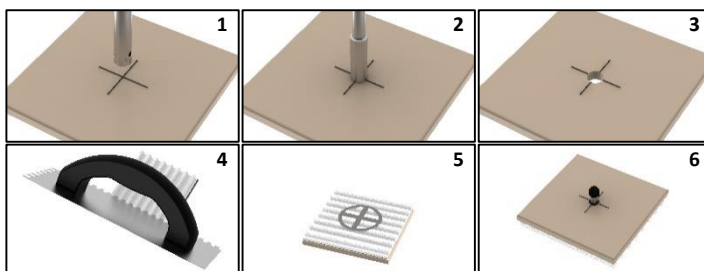


- Mark notch locations.
- Using an angle grinder, remove enough material allowing 1/16" of adjustment side to side and up and down.

**Warning:** Notches and holes should not exceed 3/8" in diameter to ensure towel bar trim has sufficient surface area during mounting.

### Technical Fact:

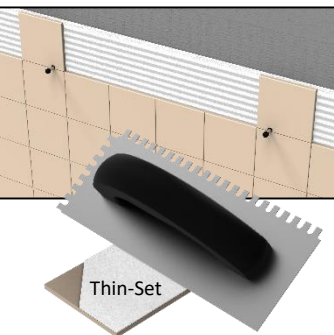
Procedures for installing PermaTile™ Fastener in the body of the tile. Use only 10mm diamond drill bit (core). Use Stabilizer as drilling template.



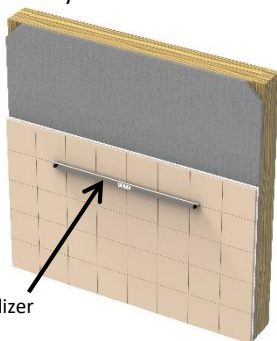
## Promessa™ Series Towel Bar

### Installation Procedures For T102-011 & T102-012

#### STEP 5 Install Notched Tiles



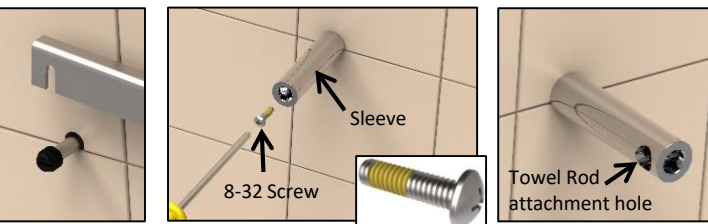
- Key thin-set mortar into the back side of tile to ensure proper contact and adhesion.
- Press tile into wall and adjust as necessary.
- Remount stabilizer, make sure it fits freely.



**Warning:** Do not proceed with accessory installation until thin-set mortar has met minimum curing requirements specified by manufacturer.

Remount stabilizer

#### STEP 7 Mount Right Side Sleeve



- Remove plastic thumb screws & stabilizer after grouting.
- Starting on right side, simply slip sleeve over threaded stud, insert 8-32 stainless steel screw and attach.
- Using a #2 phillips head screwdriver, attach screw firmly to tile wall. (Sleeve attachment hole should be visible and facing left)

**Warning:** Carefully, turn 8-32 stainless steel screw. Cross-threading will require fastener removal.

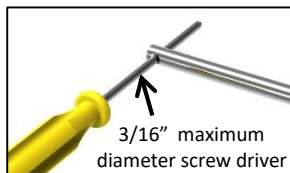
**Warning:** Each threaded stud is covered with a plastic thumb screw to prevent thin-set mortar from corrupting thread. Do not remove until grouting is complete.

**Thank you for using our products!**

**TileWare Products**  
PO Box 793, Hickory, NC 28603  
Technical Support: 828-322-9273  
Email: [info@tilewareproducts.com](mailto:info@tilewareproducts.com)  
[www.tilewareproducts.com](http://www.tilewareproducts.com)

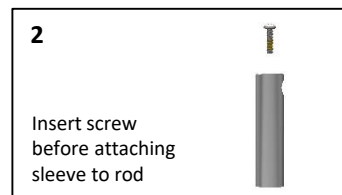
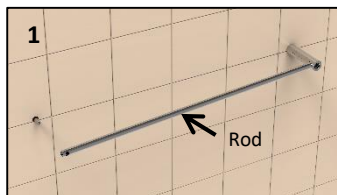
#### Towel Bar Parts List

#### STEP 6 Understanding Screwdriver



- Towel rod was designed with (2) 1/4" holes which will allow a 3/16" screwdriver to be inserted.

#### STEP 8 Mount Rod & Left Side Sleeve








1. Insert towel rod into right side sleeve.
2. Insert 8-32 stainless steel screw into sleeve (screw must be in sleeve before mounting can occur)
3. Slip sleeve onto towel rod and insert both together over threaded stud.
4. Using a #2 phillips head screwdriver, attach screw and sleeve firmly to tile wall.

#### STEP 9 Attached Caps & Anti-Rotation



- Thread on caps.
- One cap is equipped with an anti-rotation screw. Slip cap & anti-rotation screw assembly into predrilled 1/4" hole located in towel rod, then thread onto sleeve.
- Installation complete.

Model	Fastener Assembly quantity 1 per kit	Rod quantity 1 per kit	Sleeve quantity 2 per kit	Cap quantity 1 per kit	Cap & Anti- rotation Screw Assembly quantity 1 per kit	8-32 Screw quantity 2 per kit
T102-011 or T102-012 Towel Bar Kits	PT100-508 	C220-007 	C220-001 	C220-005 or C220-012 Contemporary - Traditional 	C100-005 	C200-013 